



PULSAR

600W

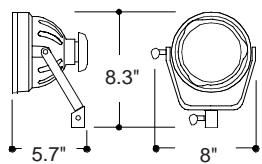
IANEBEAM REDHEAD

650W, 1000W

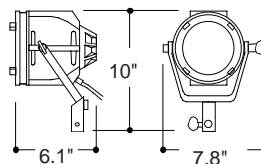
IANEBEAM BLONDE

2000W

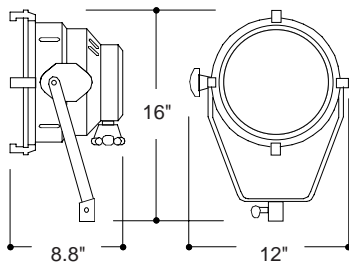
- ❑ A range of lightweight and compact open-faced focusing floodlights
- ❑ Ideal for ENG, location and video lighting
- ❑ Quick and easy to use focus controls
- ❑ Range of accessories available
- ❑ Also featured in a number of Quartzcolor portable kits
- ❑ Yokes have 5/8" (16mm) female sockets for stand mounting.
Optional C-clamp available for hanging



Ianebeam Redhead 650W



Pulsar 600W



Ianebeam Blonde 2000

Weights and dimensions

	Pulsar	Ianebeams 650 & 1000	Ianebeam 2K
Weight	3.6 lb	2.9 lb	8.5 lb
Packed weight	4 lb	3.3 lb	9.5 lb
Packed volume	0.28 cu ft	0.28 cu ft	0.98 cu ft



Mechanical/Electrical Data

Supply voltage

120V 60Hz

Cable and switching

Pulsar & lanebeams: 3ft to in-line switch plus 10ft 3 x 16AWG to molded GR Connector.

lanebeam 2K: In-line switch 3.0ft to in-line switch plus 13ft 3 x 2.5mm2 cable bare-ends.

Environmental Data

Max operating ambient temp

115°F

IP Rating

IP20

Tilt/Recommended angles of use

90° - 0 - 90°

Mechanical Data

Paint/Finish

Pulsar and lanebeam 650 & 1000: Self-colored orange glass fibre reinforced polyester.

lanebeam 2K: Heat resistant yellow paint.

Lamp house

Pulsar and lanebeam 650 & 1000: Self-colored, lightweight heat resisting glass reinforced polyester resin.

lanebeam 2K: Pressed steel and aluminum.

Reflector

Pulsar & lanebeams: Compound parabolic anodised aluminum specially textured for smooth beam distribution.

Mounting/Suspension

Pulsar and lanebeam 650 & 1000: Glass reinforced plastic yoke with 5/8" socket.

lanebeam 2K: Cast aluminum yoke with 5/8" socket.



Operational Data

Lamp access

After removal of safety screen

Focus adjustment

By rear facing rotary control except lanebeam 2K which is focused by a rotary control on the underside of the fixture.

Accessory fitting

lanebeam 650 and 1000: Detachable accessory holders.

Pulsar & Blonde: Integral accessory holders.

Photometric data

Typical performance based on DYS 600W lamp

Flood: Performance at any distance $6700 \div \text{Distance}^2$

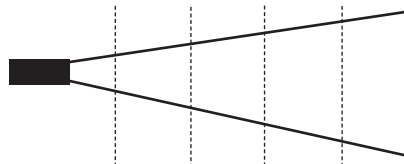
Diameter= Dist x 1.6

Spot: Performance at any distance $36300 \div \text{Distance}^2$

Diameter= Dist x 0.5

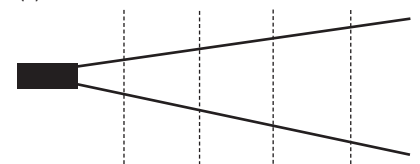
Pulsar 600W : Flood 77°

Distance (ft)	5	10	15	20
Beam Ø (ft)	8	16	24	32
Illum (fc)	270	67	30	17



Pulsar 600W : Spot 26°

Distance (ft)	5	10	15	20
Beam Ø (ft)	2.3	4.6	6.9	9.2
Illum (fc)	1450	360	160	90





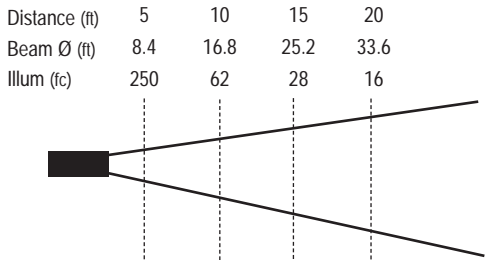
Photometric data

lanebeam 650W : Flood 80°

Typical performance based on FAD 650W lamp

Flood: Performance at any distance $6230 \div \text{Distance}^2$

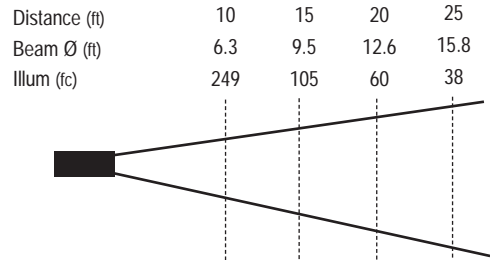
Spot: Performance at any distance $23800 \div \text{Distance}^2$



lanebeam 650W : Spot 35°

Diameter = Dist x 1.7

Diameter = Dist x 0.6

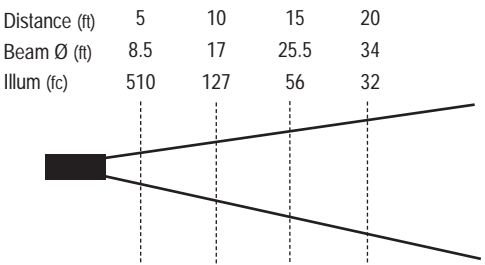


lanebeam 1000W : Flood 81°

Typical performance based on DXW 1000W lamp

Flood: Performance at any distance $12700 \div \text{Distance}^2$

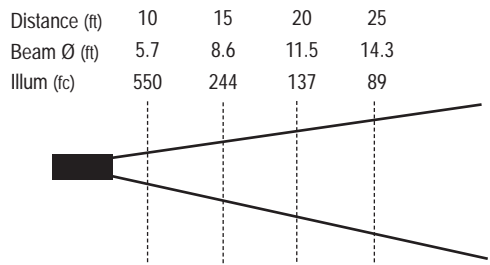
Spot: Performance at any distance $54900 \div \text{Distance}^2$



lanebeam 1000W : Spot 32°

Diameter = Dist x 1.7

Diameter = Dist x 0.6

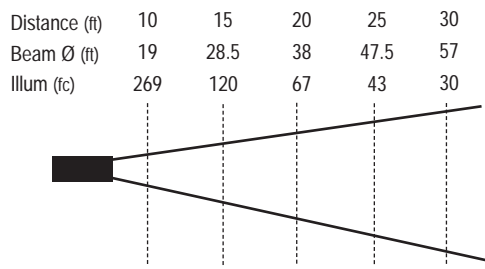


lanebeam 2000W : Flood 72°

Typical performance based on FEY 2000W lamp

Flood: Performance at any distance $26900 \div \text{Distance}^2$

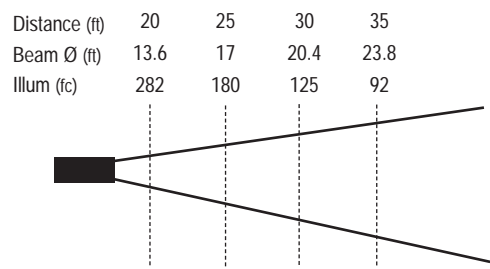
Spot: Performance at any distance $112900 \div \text{Distance}^2$



lanebeam 2000W : Spot 27°

Diameter = Dist x 1.9

Diameter = Dist x .68





Ordering information

Pulsar 600W

Compact, portable floodlight with a strong and lightweight heat-resistant polyester/glass fiber housing. Variable beam focus control knob at the rear of the unit. Supplied with 13' (4m) cable with in-line switch and molded GR connector, 4 leaf barndoor and safety glass

Cat. No.	Description
21026	Pulsar, GR connector

Pulsar accessories

Cat. No.	Description
DYS	600W 120V lamp
DYR	650W 220V lamp
28040	Barndoor, 4-leaf rotating
28080	Color frame
28041	Safety glass in mount
28042	Daylight dichroic filter in mount
28351	Scrim Set No 1A - 5 piece (2 full double, 1 full single, 1 half double, 1 half single)
95558	C-clamp with 5/8" (16mm) spigot
81004	Lightweight stand with 5/8" (16mm) spigot
82602	Small gaffer grip with 5/8" (16mm) spigot

lanebeam Redhead 650W

Lightweight and powerful open-faced fill light constructed from heat-insulating glass fiber reinforced polyester. Includes an easy-use focusing mechanism for varying beam angles (42° to 82°) with even light distribution. Designed for 650W tungsten halogen lamp it is supplied with yoke with 5/8" (16mm) socket, and 13' (4m) power cable with in-line switch and molded GR connector, accessory holder with safety wire mesh and 4 leaf barndoor.

Cat. No.	Description
21046	lanebeam 650W, GR connector

lanebeam Redhead 1000W

Version of above model with varying beam angles (32° to 81°) but designed for 1000W linear tungsten halogen lamp

Cat. No.	Description
21056	lanebeam 1000W, GR connector

lanebeam Redhead accessories

Cat. No.	Description
28021	Additional accessory holder (required for accessories below)
28022	Additional barndoor, 4 leaf
28023	Additional wire guard, 3mm
28024	Safety glass in mount
28025	Daylight dichroic filter in mount
28352	Scrim set NO 2A - 5 piece (2 full double, 1 full double, 1 half double, 1 half single)
95558	C-clamp with 5/8" (16mm) spigot
81004	Lightweight stand with 5/8" (16mm) spigot
82602	Small gaffer grip with 5/8" (16mm) spigot

lanebeam Blonde 2000

Powerful open-faced floodlight with easy-use moving reflector focusing mechanism for varying beam angles 27° to 72° with even light distribution. Supplied with integral accessory holder, safety wire mesh, 4 leaf barndoor, yoke with 5/8" (16mm) socket, 16' (5m) power cable with in-line switch.

Cat. No.	Description
21106	lanebeam Blonde 2000, bare leads

Connector Fitted Options

21106	GR (15A)
21107	GP (20A)
21108	GTL (20A)

lanebeam Blonde accessories

Cat. No.	Description
FER	1000W 120V lamp
DVV	1500W 120V lamp
FEY	2000W 120V lamp
FEX	2000W 220V lamp
28050	Barndoor, 4-leaf rotating
28053	Safety glass in mount, with 12mm wire guard
28051	Wireguard, 3mm
28054	Daylight dichroic filter
28354	Scrim set No 4A - 5 piece (2 full double, 1 full single, 1 half double, 1 half single)
95558	C-clamp with 5/8" (16mm) spigot
95535	Large kit stand with 5/8" (16mm) spigot
82603	Gaffer grip (large) with 5/8" (16mm) spigot

The Company reserves the right to make any variation in design or construction to the equipment described. © Strand Lighting Ltd 1998 Strand™, Strand Lighting™, Strand Quartzcolor™ are trade marks of Strand Lighting Limited and Strand Lighting Inc.

Strand Lighting Inc

PO Box 9004 18111 South Santa Fe Avenue Rancho Dominguez CA 90221, USA Tel: +1 310 637 7500 Fax: +1 310 632 5519
Second Floor 151 West 25th Street New York NY 10001, USA Strand Lighting Inc Tel: +1 212 242 1042 Fax: +1 212 242 1837

Strand Lighting (Canada) Inc / Eclairages Strand (Canada) Inc

2430 Lucknow Drive No 15 Mississauga Ontario L5S 1V3 Canada Tel: +1 905 677 7130 Fax: +1 905 677 6859

LONDON - BERLIN - ROME - PARIS - MOSCOW - TORONTO - LOS ANGELES - NEW YORK - HONG KONG

www.strandlighting.com